

Trauma, the brain and Sandplay

Trauma, the brain and Sandplay®

Page 1 of 4

This intensive 6 day course offers training in trauma, the brain and Sandplay along with complementary experiential work. It is designed for Psychologists, Jungian Analysts, professional therapists and professionals in the field of mental health who use Sandplay in their work and those preparing to do so. Participants who work in the field of traumatology would benefit specifically from the opportunity to train with Dr. Lorraine Razzi Freedle.



The schedule is intensive with sessions every morning, every afternoon and some evenings. You are also invited to join Dr Lorraine Razzi Freedle, Braam Beetge and Reyhana Seedat for a campfire evening in Soweto with an authentic South African braai to celebrate the energy of Africa. (The cost of this event is not included in the course fee.)

The training will be enriching and exciting and we hope that you will take advantage of this unique opportunity.

Dates: 23 – 28 April 2014

Venue: Southern Sun Hotel, Katherine St, Sandton,
Johannesburg, South Africa $26^{\circ}6'21.67''$ S | $28^{\circ}3'57.24''$ E

Telephone: +2711 884 8544

Course Fee: R10,000.00. This can be paid in R2,000.00 installments starting November 2013 and ending March 2014. Please fax monthly proofs of payment to Sandplay Intensive on **0865 039 253**

To enroll: Please e-mail or fax your application form to Education Unlimited on **0865 039 253**

Banking Details: R Seedat Nedbank Current Account

A/C Number: 100 411 3412

Branch Code: 13012610

(EFT) Branch Code: 198765

Training Co-ordinators: Braam Beetge and Reyhana Seedat

Enquiries: braambeetge@lantic.net 072 252 9832
rravat@iafrica.com 031 201 0307 (Education Unlimited)

Trauma, the brain and Sandplay

Trauma penetrates the core of one's identity, activates survival emotions, hijacks higher-order cognitive processes and leaves us shattered in its aftermath.

"Disconnects" take place on a psychological, somatic and neurological level.

Healing from trauma in Sandplay involves reconnecting to the body, accessing the transformative energies of the Self, creating a coherent trauma narrative and developing the brain's capacity for self-regulation through neural integration.

Through compelling case studies and experiential learning, Dr Lorraine Razzi Freedle will explore the impact of trauma on the brain, review leading theories on trauma and illustrate how Sandplay can effectively treat traumatized individuals.

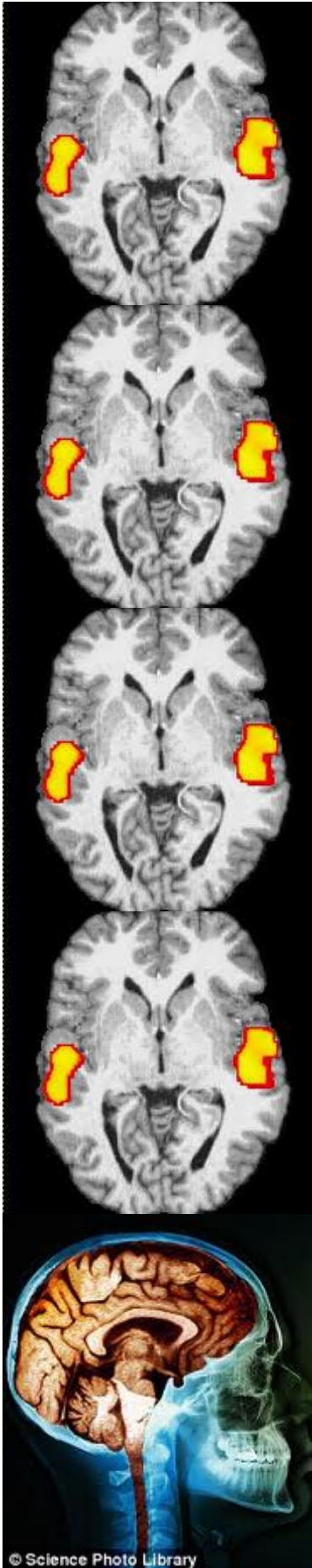
Course Highlights:

Participants will

- 👉 define trauma and its effects on the brain
- 👉 explore the evolution and function of the trauma narrative and somatosensory processing in Sandplay
- 👉 learn the four essential components of Sandplay that promote neural integration and healing of trauma (Freedle 2013)
- 👉 review the work of Donald Kalsched, Bruce Perry, Peter Levine, Daniel Siegel and others illuminated through Sandplay
- 👉 explore the Sandplay journeys of children and adults with a variety of traumatic disorders such as complex developmental trauma, PTSD, traumatic grief and traumatic brain injury
- 👉 gain knowledge about the neurobiology of empathy and stress, and the implications of vicarious trauma for Sandplay therapists
- 👉 utilize Martin Kalf's experience-based Sandplay consultation along with personal artwork and poetry to reflect on course content
- 👉 have the opportunity to explore their own case material.

Presenter:

Lorraine Razzi Freedle, Ph.D., holds a doctoral degree in Clinical Neuropsychology. She is a board certified pediatric Neuropsychologist and Psychotherapist with over 20 years of experience providing Sandplay to children and adults. She is a certified Sandplay therapist and teaching member of STA/ISST, a member of the STA research committee and a recipient of the STA Research Award for her studies in Sandplay and traumatic brain injury. Dr Freedle is a passionate presenter who illuminates current theory, neuroscience and the principles of depth psychology with compelling case studies. She presents on both national and international levels and has published in the Journal of Sandplay Therapy.



© Science Photo Library

Trauma, the brain and Sandplay

6 day Sandplay therapy intensive with Dr. Lorraine Razzi Freedle (PhD, ISST-T, STA-T) CPD (Application Pending).

Sponsored by Education Unlimited – April 23-28 2014

Application Form

Surname & Name	
City & Country	
Street Address	
Postal Code	
e-mail address	
Phone number	
Fax number	

Please list your qualifications and Clinical License status

<p>Would you want to use this opportunity to continue with Sandplay therapy training towards certification as a Certified Sandplay Therapist with ISST (International Society for Sandplay Therapy)? If so, detailed information regarding continuing education and ISST rules will be given at the training</p>

<p>Do you have Sandplay case material from your practice that you would like Group supervision on with Dr Freedle?</p>

YES	NO
------------	-----------

If yes, please mail Braam Beetge braambeetge@lantic.net for further details.

Please note that we can accept only 3 participants to present for 3 hours per case. If you need additional supervision (individual or group) with Dr Freedle please contact Braam as soon as possible.

Trauma, the brain and Sandplay

Please list other Sandplay courses you have taken, with whom and when.

Education Unlimited does not discriminate on the basis of race, gender, national and ethnic origin, creed or sexual orientation.

Please register as soon as possible so that the necessary arrangements can be made with Dr Freedle.

Cancellation Policy: Training cancelled up to 60 days prior to the scheduled date will be charged 50% of the course fee. Later cancellations will be liable for the full fee.

Confidentiality Agreement:

By assigning my name hereunder, I agree that if I am accepted to participate in the training, I will uphold the highest standards of professional confidentiality, adhering strictly at all times to all laws and ethics governing the protection of client confidentiality and agree that I will hold confidential any and all clinical material shared during the course of case presentation.

I acknowledge that such intensive study of unconscious material requires significant personal growth and transformation and affirm that I am sufficiently physically fit and emotionally sound to undertake this training. I agree to remain responsible for my own wellbeing throughout the training.

I agree to adhere to the published Cancellation Policy in the event of any circumstance requiring me to cancel my participation in this course.

Signature: _____

Date: _____



© Science Photo Library

Trauma, the brain and Sandplay®